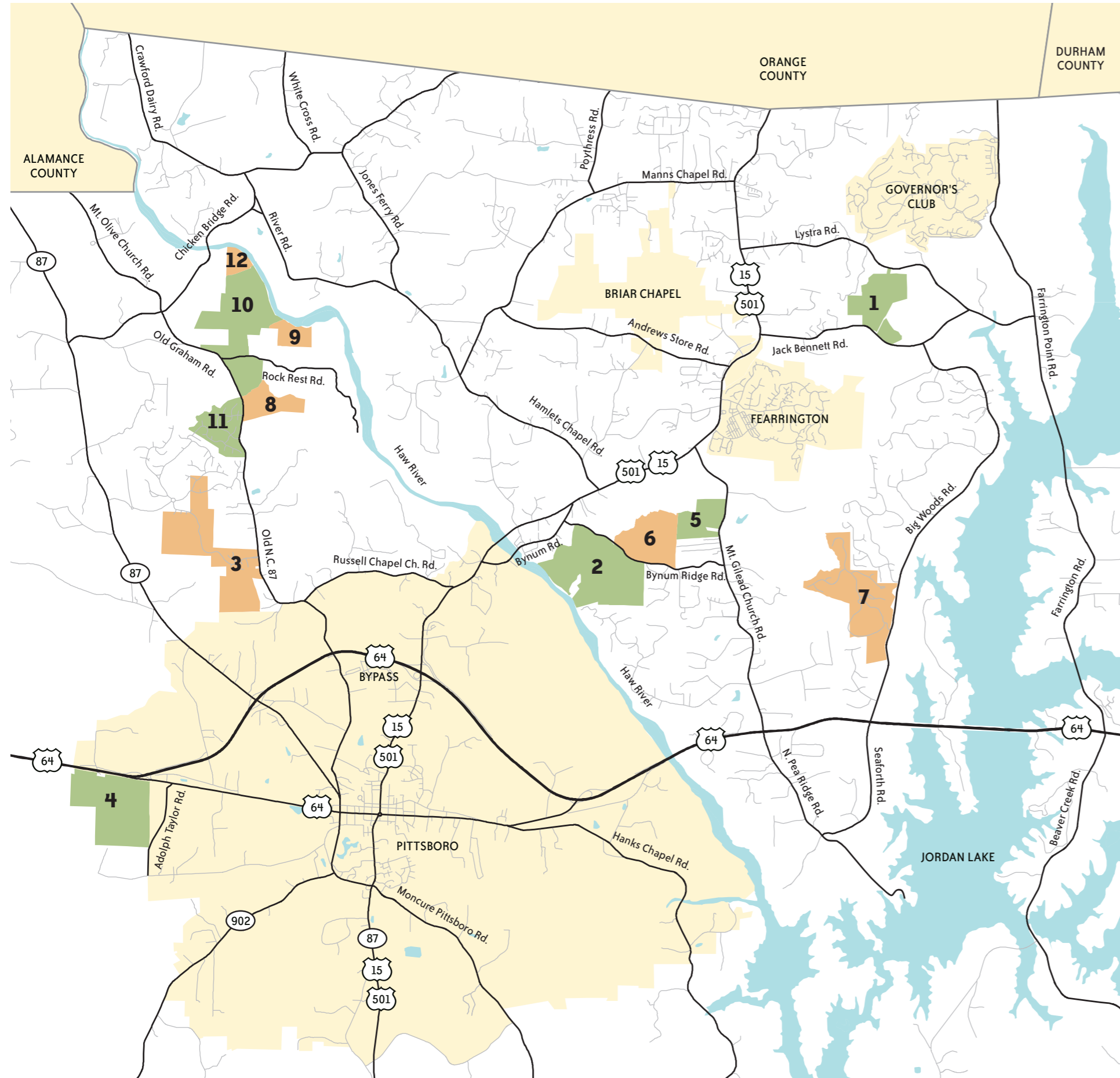


# Chatham County's zombie developments



SOURCE: CHATHAM COUNTY PLANNING DEPARTMENT. ADAPTED BY MARIA BILINSKI SHAIN

## Defunct developments that have filed for bankruptcy

#	FORMER NAME	CURRENT NAME	LOCATION	LOTS & ACREAGE	ORIGINAL HOME PRICES	FOR SALE	WHO OWNED THEN	WHO OWNS IT NOW	CHATHAM COUNTY COMMISSION AND PLANNING BOARD VOTES
1	Booth Mountain	Westfall: Westfall (estate section), Westfall Crossing (neighborhood section) & Westfall Village (village section)	Lystra Church and Jack Bennett Rds.	182 lots on 310 acres	\$400,000 to \$600,000 (no homes built)	\$8.6 million	MacGregor Development, Over Jordan, LLC.	Branch Banking and Trust (BB&T)	Unanimous
2	Williams Pond and The Sanctuary at Haw River	The Retreat on Haw River	Bynum Ridge Rd.	185 lots on 650 acres	Starting at \$800,000 (no homes built)	\$13.5 million, by C. Richard Ellis of Raleigh	Robert D. Swain, Thomas L. Fonville, Frank L. Robusk, and John C. Morisey, who sold to Crescent Resources	The Retreat on Haw River, LLC	Unanimous
3	Meadowview Unit Planned Development	The Parks at Meadowview	Old Graham Rd.	715 lots on 793 acres	\$500,000 to \$1 million (12 spec houses built)	Not for sale during bankruptcy proceedings	The Parks at Meadowview, LLC, a Crescent Resources development	Uncertain until after bankruptcy proceedings	Unanimous
4	Belmeade Farms equestrian community	Belmeade Cemetery and Memorial Gardens	Hwy. 64 & Adolph Taylor Rd.	197 lots on 565 acres	\$1.3 million (no homes built)	Cemetery lot prices not yet available	Belmeade Farms, LLC (developer Patrick O'Neal) in collaboration with Crescent Resources, LLC	Patrick O'Neal	Chatham County Commissioners approved Conditional Use Permit and cemetery plan last Feb.

## High-end developments that have stalled

#	FORMER NAME	CURRENT NAME	LOCATION	LOTS & ACREAGE	STARTING PRICE	HOMES BUILT	DEVELOPERS AT APPLICATION STAGE	CURRENT DEVELOPER	CHATHAM COUNTY COMMISSION AND PLANNING BOARD VOTES
5	Windjam Development, The Hamptons	The Hamptons Summit	Mt. Gilead Church Rd.	89 lots on 183 acres	\$800,000 to \$2 million	1 spec house	Windjam 23, LLC, developer Rex Vick Jr.	Windjam 23, LLC; Rex Osborne is marketing the development	Unanimous
6	Chatham Land & Timber Property w/ Crosland Development	Baldwin Peak	Bynum Ridge Rd.	28 lots on 300 acres	\$600,000	None	No application stage b/c lots are larger than 10 acres, excluding the development from having to go before the planning board	Marty Baum and Nick LeB	Unanimous
7	The Homestead	The Legacy at Jordan Lake	Big Woods Rd.	475 lots on 577 acres	\$775,000 to \$2 million	7 homes for sale	Jordan Lake LLC, Holland and Rebecca Gaines	Holland and Rebecca Gaines	Unanimous

## No homes have been built on these lots; land is vacant

#	FORMER NAME	CURRENT NAME	LOCATION	LOTS & ACREAGE	DEVELOPER	CHATHAM COUNTY COMMISSION AND PLANNING BOARD VOTES
8	Womble Subdivision, Creekside Subdivision	The Estates at Laurel Ridge	Old Graham Rd.	30 lots on 162 acres	Community Properties, Inc.	Unanimous
9		Shivley Tract (Phases 1, 2 & 3)	Old Graham Rd.	56 lots on 326 acres	Community Properties, Inc.	Unanimous
10		The Bluffs	Old Graham Rd.	36 lots on 180 acres	Polk-Sullivan, LLC, and Chatham Partners, LLC	Unanimous
11	Chapel Ridge Phase III	The Woodlands	Old Graham Rd.	173 lots on 242 acres	Polk-Sullivan, LLC, Chatham Partners, LLC and Virginia Grantham	Unanimous
12	Mountainview	Crescent Hill	Old Graham Rd.	2 lots on 10.5 acres	Polk-Sullivan, LLC, and Chatham Partners, LLC	Unanimous